

# Geomorphic Reclamation Study Trip

USA  
2024

RSVP  
14<sup>th</sup>  
June

COST  
\$4,000  
USD



USA  
September  
3<sup>rd</sup> - 12<sup>th</sup>



Alaska &  
New Mexico  
GeoFluv Sites



Guided by the  
world's most  
experienced



Learn about the  
challenges &  
opportunities



Learn about  
large-scale  
construction

Guided by the international GeoFluv Associates who will share their collective experience participants will visit the world's largest geomorphic reclamation site, the former LaPlata Mine, New Mexico. They will also visit ongoing GeoFluv reclamation at the active Navajo Mine in New Mexico, and visit several GeoFluv design sites in Alaska. Together the sites offer a look at geomorphic implementation in different climate regions.

All work and no play is not healthy for anyone so the trip allows for several personal site seeing days to visits sights such as Denali National Park and the Grand Canyon

**COST:**  
USD \$4,000 per person<sup>1,2</sup>

<sup>1</sup>(price based on 20 participants and subject to lower if group is larger)

<sup>2</sup>(excl. flights, accommodation, meals, sightseeing)

## RSVP & Questions:

RSVP by June 14th to:

- [matt@vast-la.com](mailto:matt@vast-la.com)
- [nicholas@geofluc.com](mailto:nicholas@geofluc.com)

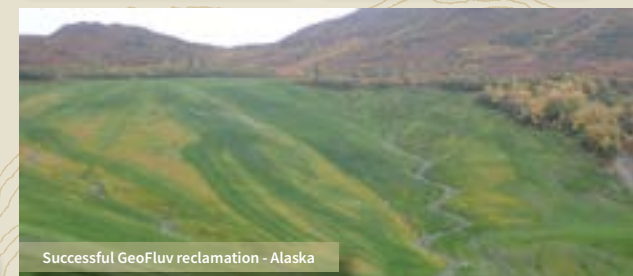
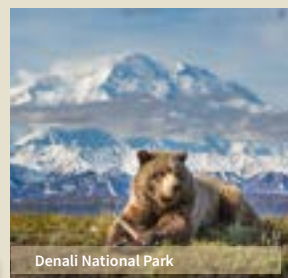
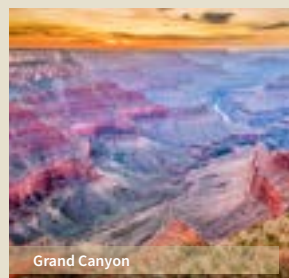
Numbers limited so be quick

USD \$500 deposit paid with RSVP

Remaining fee paid by August 1st

## ITINERARY, WHY & FAQs:

Refer to the following page





# Why join?

If you are thinking that you don't need to visit both locations because your mine site is in a different climatic region, think again!

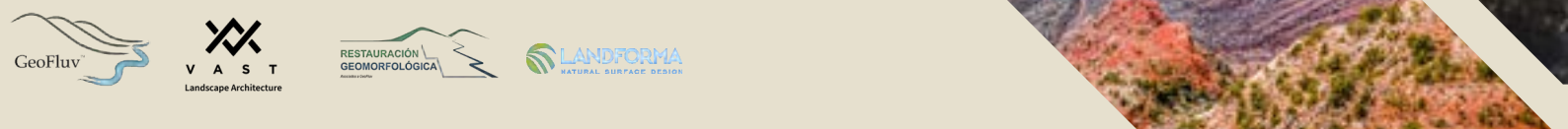
Valuable learnings will be gained from both New Mexico and Alaska as the climate does not affect a designer's or many construction experiences.

In **Alaska** learn from the Abandoned Mines program manager who has personally designed and supervised the construction of three GeoFluv sites.

In **New Mexico** learn from the inventor of the GeoFluv method visiting the 743 ha. La Plata reclamation project. Part of which he designed manually, which can be compared to sites subsequently designed by others using the Natural Regrade software.

Across both locations participants will visit completed projects allowing them to assess their long-term performance. Along with projects under construction providing the opportunity to question operators regarding how to best build sub-ridges, channels, etc. Participants will also gain experience on collecting and developing design inputs from reference areas.

After all of that, enjoy the chance to see grizzly bears, moose and other wild life, the highest peak on the North American continent, the Grand Canyon, Mesa Verde, Monument Valley, Aztec Ruins and other natural wonders.





# FAQS



## Day 1 - Anchorage (Tues. 3<sup>rd</sup> Sept.)

- Participants meet in Anchorage, Alaska
- <sup>3</sup>Night 1 in Anchorage



## Day 2 - Anchorage-Healy (Wed. 4<sup>th</sup>)

- Morning – orientation to mine & reclamation projects
- Afternoon - travel to Healy
- <sup>3</sup>Night 1 Healy area



## Day 3 - Healy, Usibelli Mine (thurs. 5<sup>th</sup> Sept.)

- Visit reclamation sites
- <sup>3</sup>Night 2 Healy area



## Day 4 - Healy, Usibelli Mine (fri. 6<sup>th</sup>)

- Morning - visit reclamation sites
- Afternoon - travel to Anchorage
- <sup>3</sup>Night 2 in Anchorage or as planned by participant



## Day 5-7 - Sightseeing Alaska (sat. 7<sup>th</sup>-mon. 9<sup>th</sup>)

- Participant sightseeing (booked and organized by participants)



## Day 7-8 - Anchorage-Farmington (mon. 9<sup>th</sup>-tues. 10<sup>th</sup>)

- Flights, Anchorage to Durango
- Travel to Farmington
- <sup>3</sup>Night 1 in Farmington



## Day 9 - Farmington (wed. 11<sup>th</sup>)

- Morning – orientation to mine & reclamation projects
- Afternoon - field visit (reference sites and data collection)
- <sup>3</sup>Night 2 in Farmington



## Day 10 - Farmington (thurs. 12<sup>th</sup>)

- Visit La Plata reclamation site
- <sup>3</sup>Night 3 in Farmington



## Day 11 - Farmington (fri. 13<sup>th</sup>)

- Visit Navajo reclamation site
- Afternoon - travel to Durango
- <sup>3</sup>Night 1 in Durango or as planned by participant



## Day 12 - Sightseeing Southwestern U.S.A. (sat. 14<sup>th</sup>)

- Participant sightseeing (booked and organized by participants)

### Incoming and outgoing flights.

- Participants are responsible for booking their flights to and from the US including obtaining the required visas.
- **Arrivals** - Participants will be provided with a specific time & date to meet at the Anchorage Airport, ANC.
- **Departures** - The tour will finish in Durango, Colorado. Flights can be booked from Durango Airport, DRO, or plans made for sightseeing before heading home.

### Internal flights.

- Participants are responsible for booking their internal flights. Details on the specific flights will be provided.

### <sup>3</sup>Accommodation.

- Participants book their own accommodation in each location. Hotels in each place will be recommended.

### Site visit and airport travel.

- All internal car/van travel organised by the GeoFluv Team. This includes:
  - » Travel to and from mine sites.
  - » Airport pick-ups and drop-offs where practicable.

### What is included in the costs?

- Tour guides having years of GeoFluv design and construction experience.
- A hosted welcome dinner.
- Car hire for site visits and airport pick-ups and drop-offs.
- A copy of the new Geomorphic Reclamation Design textbook by Nicholas Bugosh.

### Who are the guides?

- The guides will be from among the global GeoFluv Associates, including:
  - » Nicholas Bugosh - GeoFluv Founder, USA
  - » Professor José F. Martín-Duque - Complutense University of Madrid, global geomorphic expert
  - » Matt Baida - VAST, Landscape Architect, Sweden & Canada
  - » Rod Eckels - Landforma, CEO, Australia

### Sightseeing.

- Participants are free to make their own arrangements on “free days” – book tours etc.